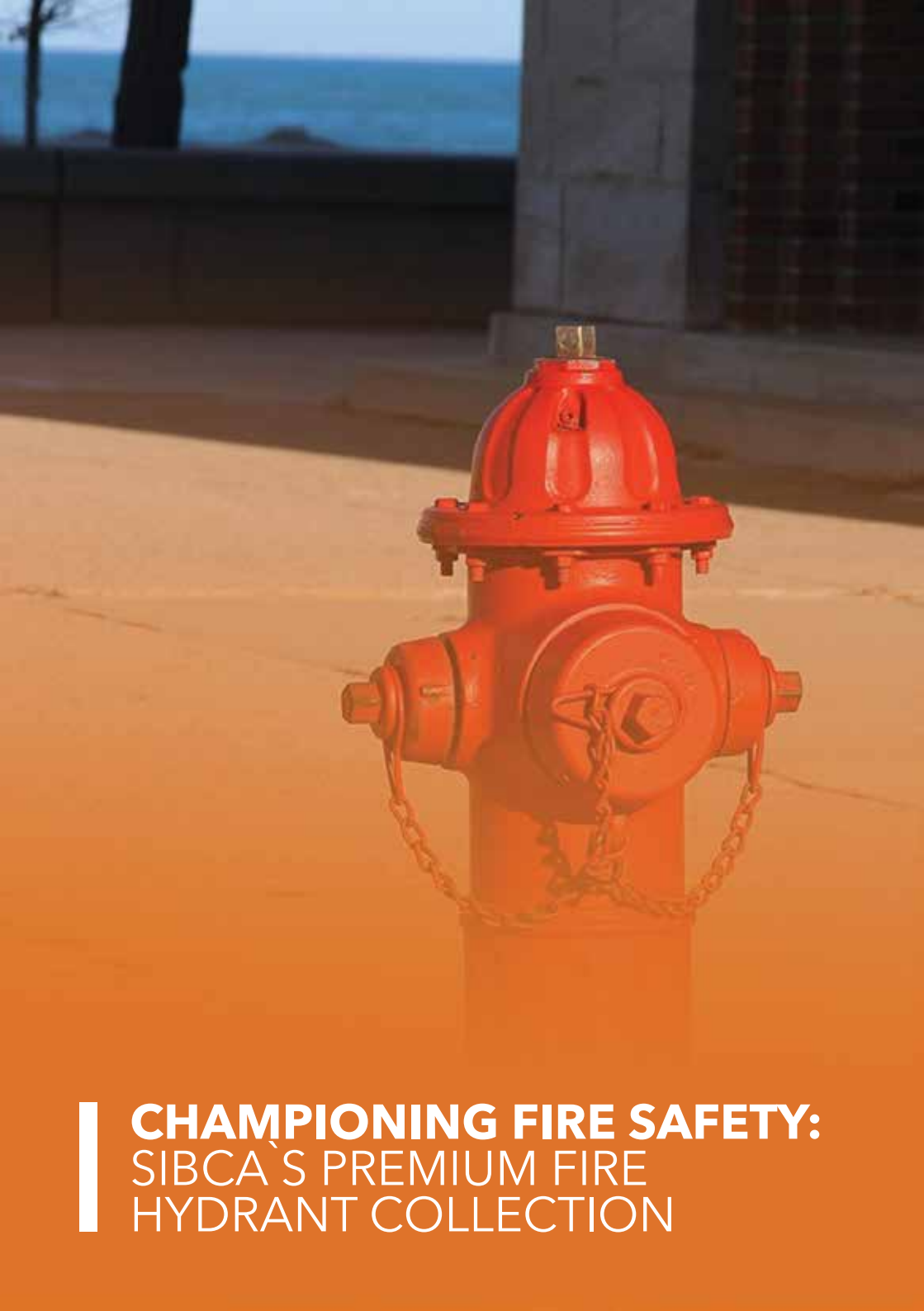


FIRE HYDRANTS





CHAMPIONING FIRE SAFETY:
SIBCA'S PREMIUM FIRE
HYDRANT COLLECTION

INTRODUCTION

Presenting SIBCA's fire hydrants that are made with the best quality of materials and tested to optimum capacity to ensure that it meets requirements and efficiency. They are designed to be sturdy and reliable for use in various locations. To withstand different weather conditions, they are weatherproof. Each hydrant comes with a range of accessories like hoses, nozzles, wrenches, and lights that meet the specific needs of each customer.

1. SIBCA's UL/FM-certified Dry Barrel Fire Hydrant provides exceptional performance and sets the benchmark for firefighting equipment.
2. The UL/FM-approved Wet Barrel Fire Hydrant ensures unwavering reliability in emergencies, giving you confidence when it's needed most.

Trust SIBCA for top-notch fire hydrants that safeguard your property during fire emergencies.



**OUR GOAL IS TO
ENHANCE GLOBAL
SAFETY**

To support SIBCA's vision of enhancing global safety, it has allotted a 40,000 square meter manufacturing facility with the state-of-the-art technology to meet global standards and requirements.

■ Focus on High Quality

SIBCA products have undergone rigorous certification and listing processes, receiving approval from esteemed organizations such as Underwriters Laboratories (UL) in the United States and the British Standards Institution (BSI) in Europe. Moreover, these products are manufactured adhering to stringent international quality and environmental management standards and requirements. This commitment ensures that SIBCA maintains consistently high levels of product excellence and sustainability throughout its manufacturing processes.

■ Cost Effective & Practical

SIBCA systems are pre-engineered and require minimal maintenance costs throughout certified product life. Their compact design makes them an ideal solution for even the most technically challenging projects.

■ Support & Expertise

SIBCA aligns its products with the latest information on fire engineering standards and applications, backed by worldwide support. SIBCA's extensive global distribution network consists of proficient and certified professionals who are prepared to handle the design, supply, installation, and maintenance of the complete range of SIBCA products.

FIRE HYDRANT WET BARREL



Technical Specifications

Model	GE-0281	GE-0281A	GE-0282	GE-0282A
Brand	SIBCA			
Approval	UL Listed / FM Approved			
Design Standard	AWWA C503			
External Thread Standard	NFPA 1963 2.5" - 7.5NH / 4" - 4NH / 4.5" - 4NH			
Water Inlet Flange Standard	ASTM B16.5 Class 150 6" / DIN2501 PN16 DN150			
Maximum Adjust Pressure	250 PSI (17 Bar)			
Monitor Flange Standard	ASTM B16.5 Class 150 4" / DIN2501 PN16 DN100			
Working Temperature	0°C - 80°C			

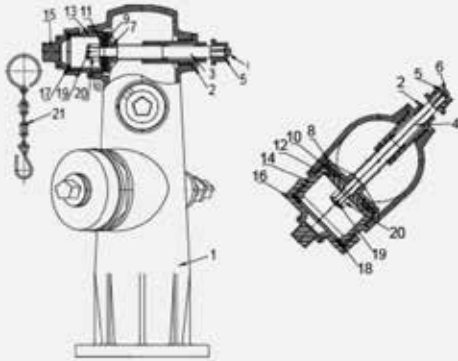
General Technical Information

Model	Hose Outlet Size	Pumper Nozzle Size	Monitor
GE-0281	2 x 2.5"	1 x 4.5"	N/A
GE-0281A	2 x 2.5"	1 x 4.5"	Yes
GE-0282	2 x 2.5"	1 x 4"	N/A
GE-0282A	2 x 2.5"	1 x 4"	Yes

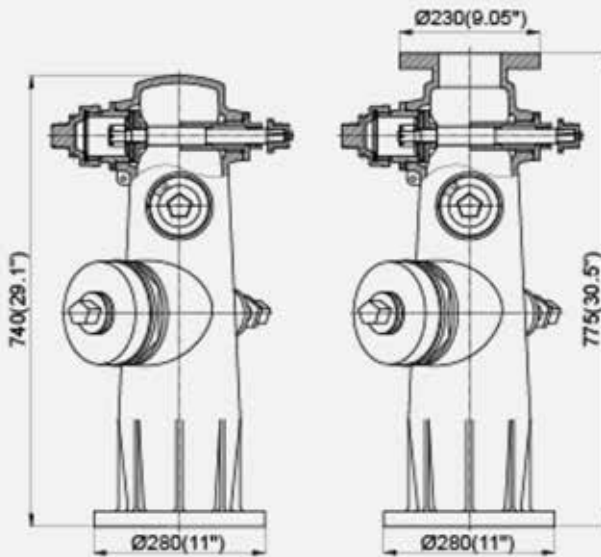
Material Specifications

No.	Part Name	Qty	Material
1	Main Body	1	Ductile Iron
2	Nut	3	C954
3	2.5" Bolt	2	SS304 / C954
4	4.5" Bolt	1	SS304 / C954
5	Stem Cap	3	Ductile Iron
6	Bolt	3	SS304
7	2.5" Tray	2	Ductile Iron / SS304 / C954
8	4.5" Tray	1	Ductile Iron / SS304 / C954
9	2.5" Sealing Rubber Sheet	2	EPDM
10	4.5" Sealing Rubber Sheet	1	EPDM
11	2.5" Platen	2	Ductile Iron / SS304 / C954
12	4.5" Platen	1	Ductile Iron / SS304 / C954
13	2.5" Outlet	2	C954
14	4.5" Outlet	1	C954
15	2.5" Outlet Cover	2	Ductile Iron
16	4.5" Outlet Cover	1	Ductile Iron
17	2.5" Cover Gasket	2	EPDM
18	4.5" Cover Gasket	1	EPDM
19	Cotter Pin	3	SS304
20	Slotted Nut	3	SS304
21	Cover Chain		Gr. B

General Assembly Drawing



Dimensions



FIRE HYDRANT DRY BARREL



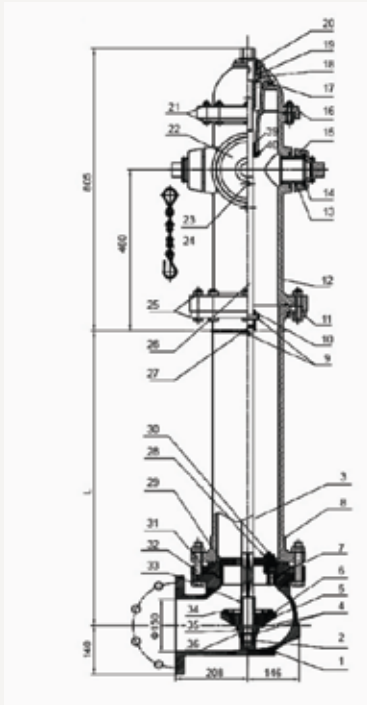
Technical Specifications

Model	GD-0271	GD-0272
Brand	SIBCA	
Approval	UL Listed / FM Approved	
Design Standard	AWWA C502	
Nominal Pressure	250 PSI (17 Bar)	
Inlet Flange Size	6" (DN150)	
Main Valve Size	133.4 mm / 5 1/4"	
Pumper Nozzle	1 x 4.5"- 4NH Thread	
Hose Nozzle	2 x 2.5"- 7.5NH Thread	
Connector	Mechanical	Flange
Connector Standard	(AWWA / ANSI C153 / A21.536)	(ASME B16.5 C150 / DN250 PN16)
Painting	Red Polyurethane Paint and Bitumen Black	

Buried Dimensions

L	3'6"	4'	4'6"	5'	5'6"	6'	6'6"	7'
(mm)	1063	1215	1368	1520	1673	1825	1978	2130

General Assembly Drawing



Material Specifications

No.	Part Name	Material
1	Flange or Mechanical Connector	Ductile Iron
2	Locking Nut	Ductile Iron
3	Connecting Rod	Steel 1045
4	Locking Nut Gasket	EPDM
5	Tray	Ductile Iron
6	Sealed Rubber Sheet	EPDM
7	Drain Hole Spring	316 Stainless Steel
8	Connecting Cylinder	Ductile Iron
9	Perforated Cylindrical Pin	Steel 1045
10	Connecting Rod Sleeve	Steel 1045

No.	Part Name	Material
11	Clamp for Connection Tube	Ductile Iron
12	Main Body on Ground	Ductile Iron
13	65 Connector	C95400
14	65 Cover Gasket	EPDM
15	65 Cover	Ductile Iron
16	Upper End Cover	Ductile Iron
17	Thread Plug	C95400
18	Screw Stem Nut	C95400
19	Screw Nut Gasket	C95400
20	Screw Nut Seat	C95400
21	Bolt, Nut	Steel 1035
22	100 Cover	Ductile Iron
23	Cylindrical Pin	Steel 1045
24	Cover Chain	Gr. B ASTM A283-B
25	Bolt, Nut	Steel 1035
26	Screw Stem	Steel 1045
27	Cushion Rubber	EPDM
28	Drain Hole Cover	C95400 + EPDM
29	Seat	C95400
30	Bolt, Nut	316 Stainless Steel
31	Seat Fixing Plate	Ductile Iron
32	Bolt, Nut	Steel 1035
33	Annular Tubes	Steel 1045
34	Platen	Ductile Iron
35	Locking Nut Seat	Ductile Iron
36	Check Turn Gasket	Gr. B
37	100 Connector	C95400
38	100 Cover Gasket	EPDM
39	Screw Stem Bushing	316 Stainless Steel
40	Bolt	316 Stainless Steel



سيبكا
SIBCA



CONTACT US:

Email: guard@sibca.com
info@sibca.com

Phone: +971 2 4978600

Location: Abu Dhabi, UAE

Website: www.sibca.com