

LANDING VALVES BREECHING INLET





UNRIVALED FIRE SAFETY:
DISCOVER SIBCA'S LANDING
VALVES AND BREECHING INLETS

INTRODUCTION

SIBCA's landing valves and breeching systems are engineered for durability, ensuring resilience even in harsh environments and extreme temperatures. Designed to comply with rigorous fire testing regulations, our products guarantee reliable operation when it matters most. Additionally, certain models feature integrated reducing valves, providing precise outlet pressure regulation to accommodate varying inlet pressures, a crucial requirement in many installation scenarios.



GUARD
Fire Fighting Equipment Manufacturers

**OUR GOAL IS TO
ENHANCE GLOBAL
SAFETY**

To support SIBCA's vision of enhancing global safety, it has allotted a 40,000 square meter manufacturing facility with the state-of-the-art technology to meet global standards and requirements.

■ Focus on High Quality

SIBCA products have undergone rigorous certification and listing processes, receiving approval from esteemed organizations such as Underwriters Laboratories (UL) in the United States and the British Standards Institution (BSI) in Europe. Moreover, these products are manufactured adhering to stringent international quality and environmental management standards and requirements. This commitment ensures that SIBCA maintains consistently high levels of product excellence and sustainability throughout its manufacturing processes.

■ Cost Effective & Practical

SIBCA systems are pre-engineered and require minimal maintenance costs throughout certified product life. Their compact design makes them an ideal solution for even the most technically challenging projects.

■ Support & Expertise

SIBCA aligns its products with the latest information on fire engineering standards and applications, backed by worldwide support. SIBCA's extensive global distribution network consists of proficient and certified professionals who are prepared to handle the design, supply, installation, and maintenance of the complete range of SIBCA products.

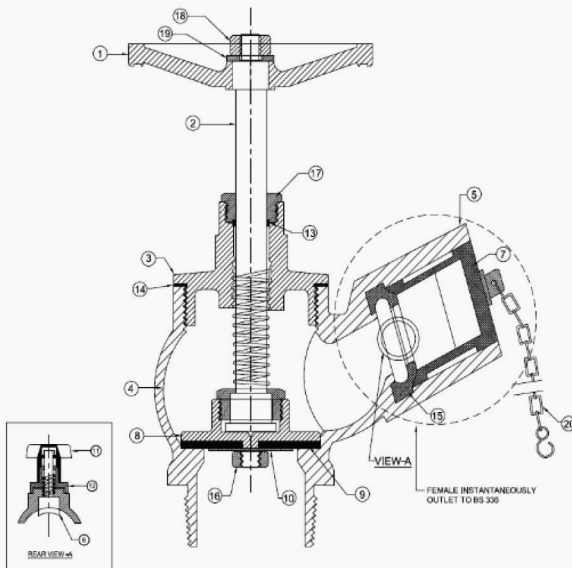
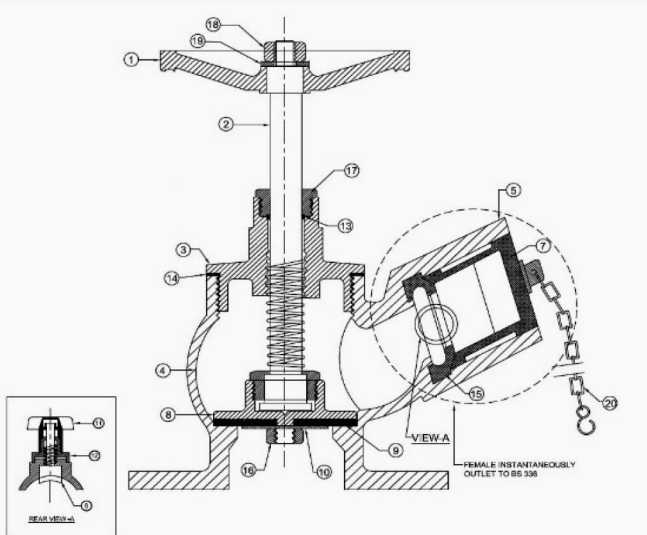
OBLIQUE LANDING FLANGE AND THREAD



Technical Specifications

Model	GD-0220	GD-0230
Approval	BSI - Kitemark	
Standard	BS 5041: Part 1	
Size	DN 2.5) 65")	
Inlet	Flange as per BS 4504 PN16	Thread as per BS 21
Maximum Working Pressure	15 Bar	
Test Pressure (Valve Seat)	16.5 Bar	
Test Pressure (Body Test)	22.5 Bar	
Minimum Water Flow Rate & Outlet Pressure	8.5 L/S Min. @ 4.0 Bar	
Minimum Inlet Pressure	4.7 Bar	
KM794905		

General Assembly Drawing



Material Specifications

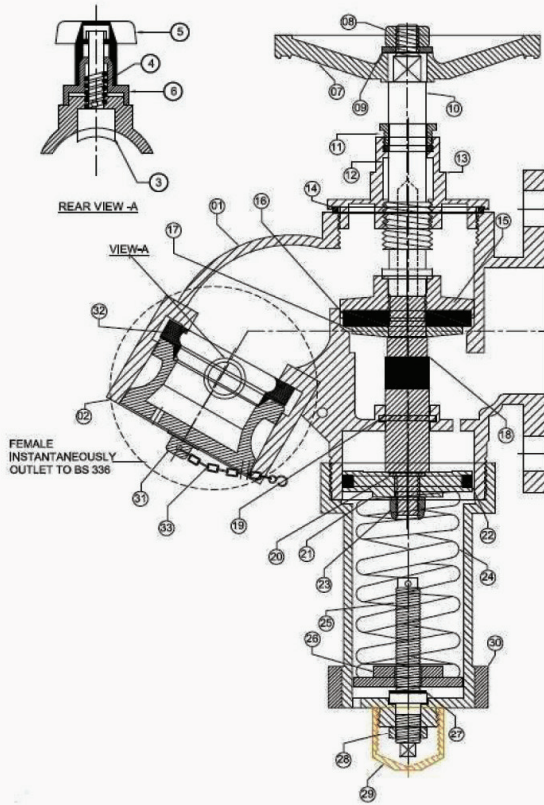
No.	Part Name	Material	Specification
1	Handwheel	Grey Cast Iron	BS 150 1452
2	Stem	Copper Alloy	BS 2874 CZ 121
3	Bonnet	Copper Alloy	BS 2872 CZ 122
4	Body	Copper Alloy	BS 1400 LG 2
5	Female Instantaneous Outlet	Copper Alloy	BS 1400 LG 2
6	Release Plunger	Copper Alloy	BS 2872 CZ 122
7	Blank Cap	Copper Alloy	BS 2872 CZ 122
8	Renewable Disk	Copper Alloy	BS 2872 CZ 122
9	Renewable Disk Facing	Natural Rubber	BS 1154 Min 70 IRHD
10	Disk Washer	Stainless Steel	-
11	Upper Part of Lugs	Copper Alloy	BS 2872 CZ 122
12	Lower Part of Lugs	Copper Alloy	BS 2872 CZ 122
13	Gland Rubber Seal	Natural Rubber	BS 1154 Z70
14	Bonnet Rubber Seal	Natural Rubber	BS 1154 Z70
15	Coupling Washer	Natural Rubber	BS 1154 Z40
16	Nut	Stainless Steel	-
17	Gland	Copper Alloy	BS 2874 CZ 121
18	Nut	Stainless Steel	-
19	Washer	Stainless Steel	-
20	"S" Hook Chain	MS "S" Hook and Chain	-

LANDING VALVE PRESSURE REGULATING VALVE



Technical Specifications

Model	GD-0240
Approval	BSI - Kitemark
Standard	BS 5041: Part 1
Maximum Working Pressure	20 Bar
Flange	DN 65
Outlet Pressure	250 GPM @ 6.9 Bar
Pressure Regulating	4 Bar to 12 Bar
Test Pressure (Valve Seat)	22 Bar
Test Pressure (Body)	30 Bar
KM794905	

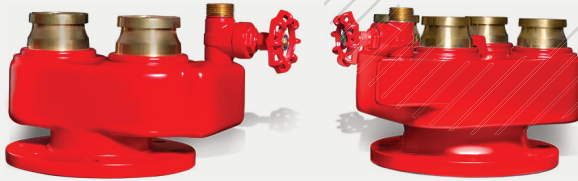


Material Specifications

No.	Part Name	Material	Specification
1	PRV Body	Copper Alloy	BS 1400 LG 2
2	Female Instantaneous Outlet	Copper Alloy	BS 2874 CZ 121
3	Release Plunger	Copper Alloy	BS 2872 CZ 122
4	Outlet Spring	Spring Steel	-
5	Upper Part of Lugs	Copper Alloy	BS 2872 CZ 122
6	Lower Part of Lugs	Copper Alloy	BS 2872 CZ 122
7	Handwheel	Grey Cast Iron	BS 1452 Grade 150
8	Handwheel Nut	Stainless Steel	-
9	Handwheel Washer	Stainless Steel	-
10	Stem	Copper Alloy	BS 2874 CZ 121
11	Gland	Copper Alloy	BS 2872 CZ 122
12	Gland Rubber Seal	Natural Rubber	BS 1154 Z 70
13	Bonnet	Copper Alloy	BS 2872 CZ 122
14	Bonnet Rubber Seal	Natural Rubber	BS 1154 Z 70
15	Upper Renewable Disc	Copper Alloy	BS 2872 CZ 122
16	Upper Renewable Disc Facing	Natural Rubber	BS 1154 Z 70
17	Renewable Disc Washer	Copper Alloy	BS 2872 CZ 122
18	Upper Stem	Copper Alloy	BS 2874 CZ 121
19	"O" Ring	Natural Rubber	BS 1154 Z 70
20	"O" Ring	Natural Rubber	BS 1154 Z 70
21	Bottom Renewable Disc	Copper Alloy	BS 2872 CZ 122
22	Bottom Renewable Disc Facing	Natural Rubber	BS 1154 Z 70
23	Disc Nut	Stainless Steel	-
24	Pressure Regulating Spring	Chrome Vanadium Steel	BS 735 5-970 A50
25	Lower Stem	Copper Alloy	BS 2874 CZ 121
26	Adjusting Screw Plate	Copper Alloy	BS 2872 CZ 122
27	"O" Ring	Natural Rubber	BS 1154 Z 70
28	Nut	Copper Alloy	BS 2872 CZ 122
29	Bottom Thread Cap	Copper Alloy	BS 1154 CZ 122
30	Distant Piece	Copper Alloy	BS 1400 LG 2
31	Blank Cap	Copper Alloy	BS 2872 CZ 122
32	Coupling Washer	Natural Rubber	BS 1154 Z 40
33	"S" Hook and Chain	MS Chain and Hook	-

BREECHING INLET

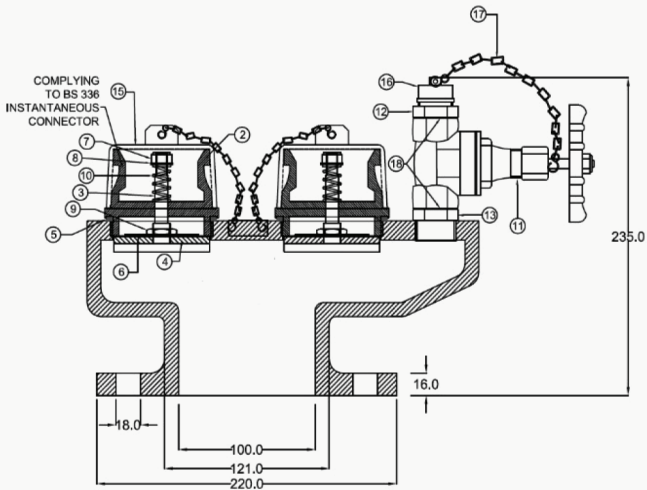
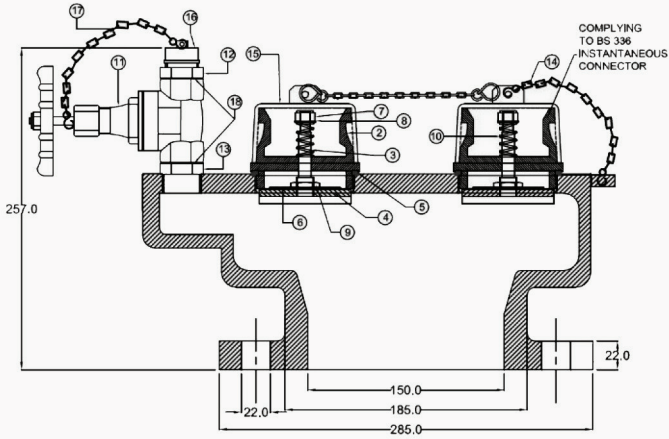
2 WAY AND -4WAY



Technical Specifications

Model	GD-0251	GD-0252
Brand	SIBCA	
Approval	BSI - Kitemark	
Standard	BS 5041: Part 3	
Nominal Flange Outlet Size	100 mm	150 mm
Inlet Connection (Instantaneous Connector)	2 (BS 336)	4 (BS 336)
Nominal Working Pressure	10 Bar	
Test Pressure	20 Bar	
Flange	BS 4504 PN16	
Drain Valve	BS 5154: Part 3	
KM 794905		

General Assembly Drawing



Material Specifications

No.	Part Name	Material	Specification
1	Body	Spheroidal Graphite Iron	BS 18/400 2789
2	Inlet NRV Connection Body	Copper Alloy	BS 2872 Grade Z 122
3	NRV Stem Valve	Copper Alloy	BS 2872 Z 122
4	NRV Rubber Flat Renewable Disc	Natural Rubber	BS 1154 Min 70 IRHD
5	NRV Rubber Flat Washer	Natural Rubber	BS 1154 Min 70 IRHD
6	NRV SS Washer Disc	Stainless Steel	-
7	SS Lock Nut	Stainless Steel	-
8	SS Lock Nut Washer	Stainless Steel	-
9	Brass Nut	Copper Alloy	BS 2872 Z 122
10	NRV Spring	Spring Steel	-
11	Drain Valve (Gate Valve)	Copper Alloy	BS 2872 Z 122
12	Brass Nipple after Gate Valve	Copper Alloy	BS 2872 Z 122
13	Brass Nipple before Gate Valve	Copper Alloy	BS 2872 Z 122
14	Chain for Inlet Blank Cap	MS "S" Hook Chain	-
15	Blank Cap for NRV Inlet	Plastic	-
16	Blank Cap for Drain Valve	Plastic	-
17	Chain for Drain Valve Blank Cap	MS "S" Hook Chain	-
18	Rubber "O" ring	Natural Rubber	-



سيبكا
SIBCA



Fire Fighting Equipment Manufacturers

CONTACT US:

Email: guard@sibca.com
info@sibca.com

Phone: +971 2 4978600

Location: Abu Dhabi, UAE

Website: www.sibca.com